

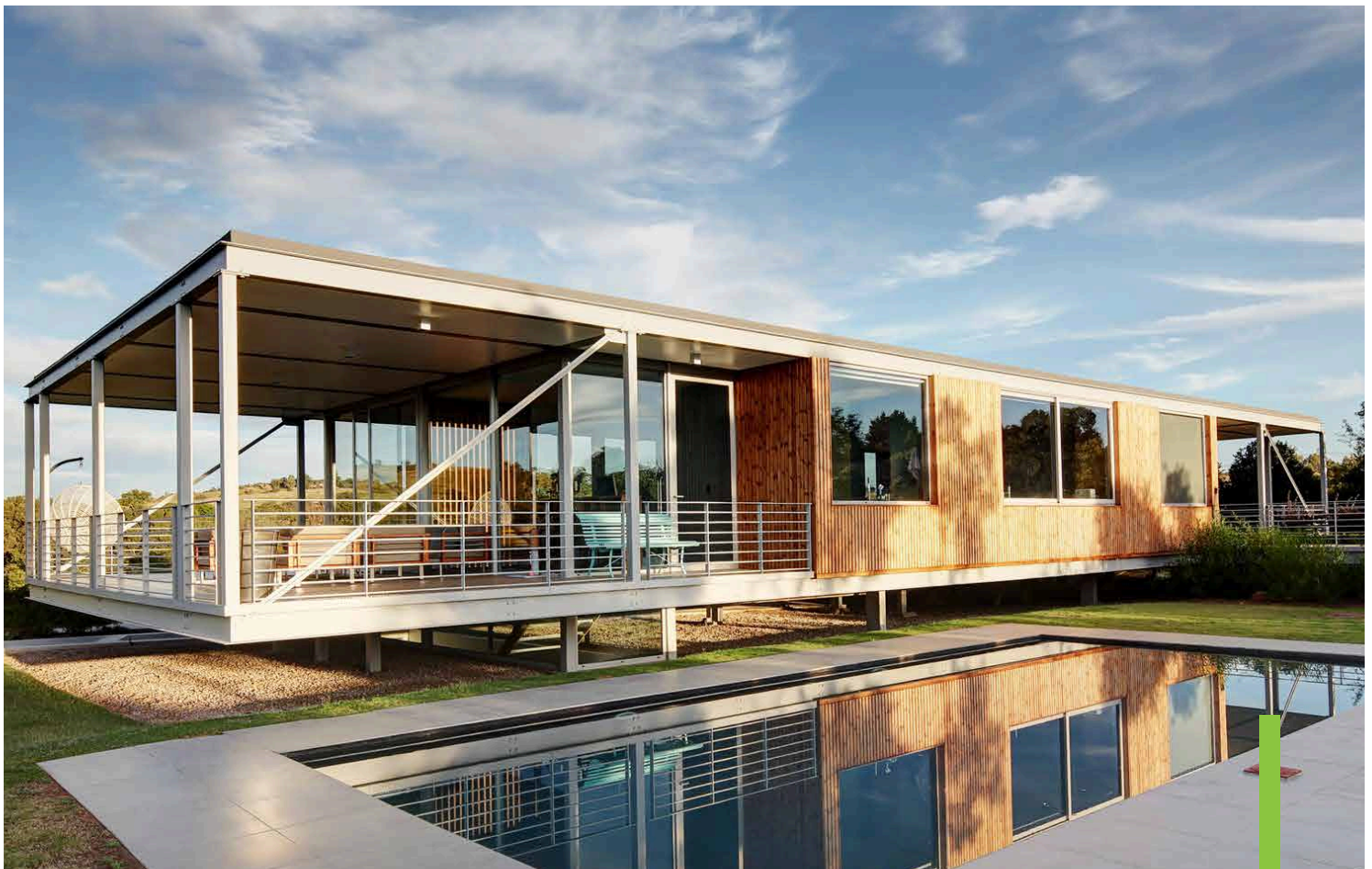


Aluminium windows & doors

THE ULTIMATE EUROPEAN QUALITY

# DOOR SYSTEMS

**SCHÜCO**



# ACCESS OUR WORLD OF LUXURY

---

ATE EUROPEAN QUALITY  
RIVE FOR PERFECTION  
↓ ALUMINIUM SYSTEMS  
ATE EUROPEAN QUALITY  
RIVE FOR PERFECTION  
↓ ALUMINIUM SYSTEMS  
ATE EUROPEAN QUALITY  
RIVE FOR PERFECTION

INNOVATIVE - CERTIFIED EUROPEAN ALUMINIUM SYSTEMS  
PREMIUM QUALITY - LUXURY - ULTIMATE EUROPEAN QUALITY  
THE HOME OF EXCELLENCE - STRIVE FOR PERFECTION  
INNOVATIVE - CERTIFIED EUROPEAN ALUMINIUM SYSTEMS  
PREMIUM QUALITY - LUXURY - ULTIMATE EUROPEAN QUALITY  
THE HOME OF EXCELLENCE - STRIVE FOR PERFECTION  
INNOVATIVE - CERTIFIED EUROPEAN ALUMINIUM SYSTEMS  
PREMIUM QUALITY - LUXURY - ULTIMATE EUROPEAN QUALITY  
THE HOME OF EXCELLENCE - STRIVE FOR PERFECTION  
INNOVATIVE - CERTIFIED EUROPEAN ALUMINIUM SYSTEMS  
PREMIUM QUALITY - LUXURY - ULTIMATE EUROPEAN QUALITY  
THE HOME OF EXCELLENCE - STRIVE FOR PERFECTION  
INNOVATIVE - CERTIFIED EUROPEAN ALUMINIUM SYSTEMS  
PREMIUM QUALITY - LUXURY - ULTIMATE EUROPEAN QUALITY  
THE HOME OF EXCELLENCE - STRIVE FOR PERFECTION

INNOVATIVE - CERTIF  
PREMIUM QUALITY - LI  
THE HOME OF EXCE  
INNOVATIVE - CERTIF  
PREMIUM QUALITY - LI



Aluminium windows & doors

---





Our elite German engineering team meticulously crafts our certified European hinge doors and pivot doors, taking into account every aspect of your home's primary access point – YOUR ENTRANCE. From aesthetics to safety, this system consistently delivers, featuring robust accessories that enable the pivot door to support up to 250kg and a five-point locking mechanism to ensure peace of mind during the night. With our innovative aluminum systems, you can maximize the influx of natural light as you design the entrance of your dreams.

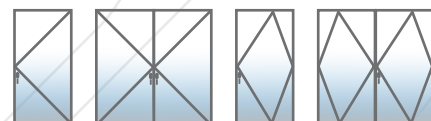


# HINGE DOOR

## TECHNICAL CHARACTERISTICS

- Casement of system 50mm
- Basic width of frame and sash 141mm
- Glass thickness 6mm - 32mm
- Maximum weight of sash 120kg

## TYOLOGIES GUIDE

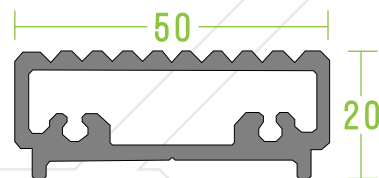


# PIVOT DOOR

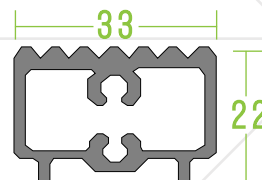
## TECHNICAL CHARACTERISTICS

- Casement of system 50mm
- Basic width of frame and sash 168mm
- Glass thickness 6mm - 32mm
- Maximum weight of sash 250kg

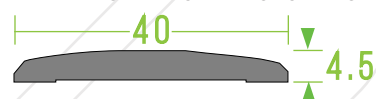
PIVOT DOOR THRESHOLD



OUTWARD OPENING THRESHOLD FOR HINGE DOOR



INWARD OPENING THRESHOLD FOR HINGE DOOR



## CERTIFICATES FOR HINGE/PIVOT DOOR

Air permeability DIN EN 12207 Class 2

Windload resistance DIN EN 12210 Class C3

Burglar resistance DIN EN 1627 RC2

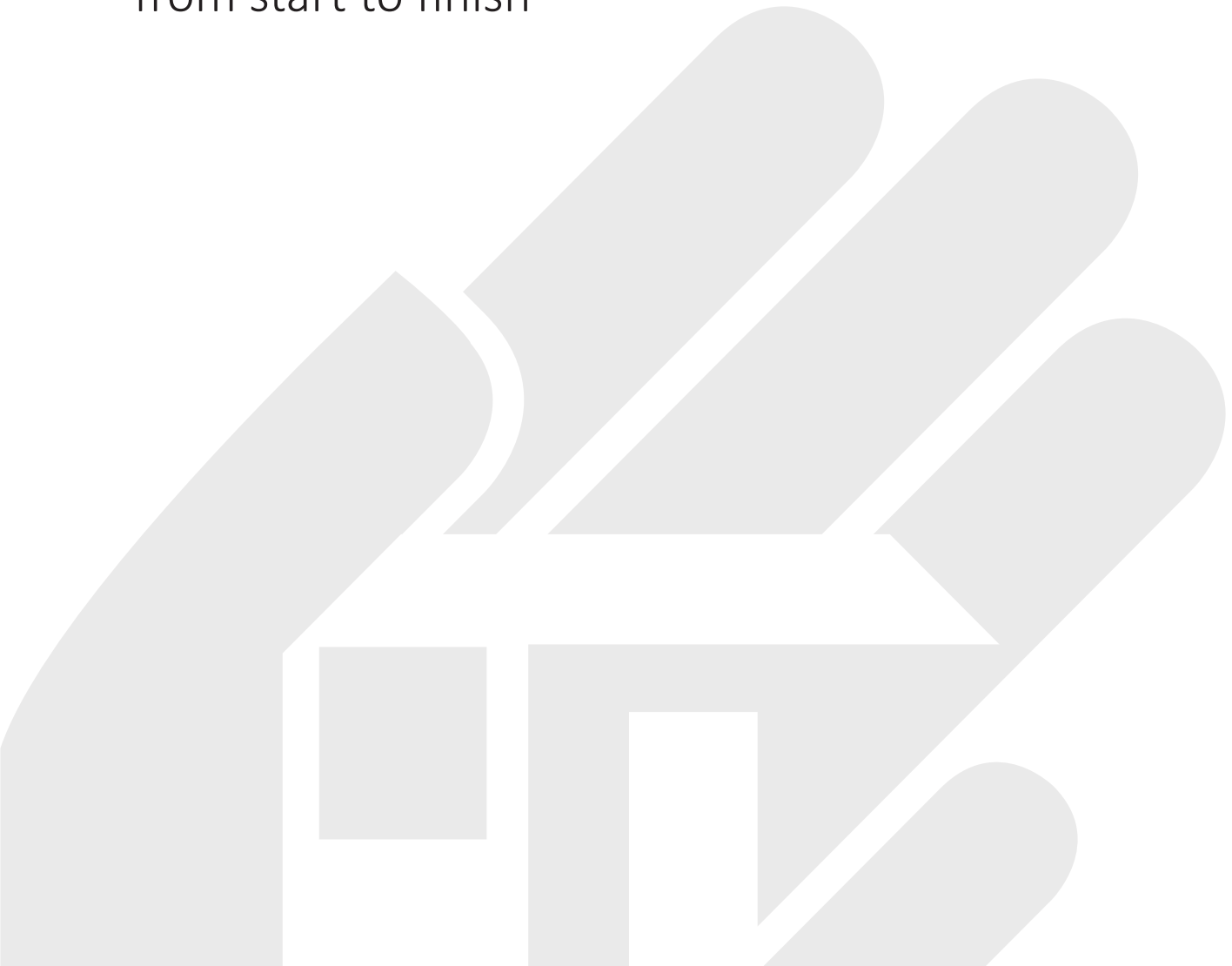
# WE ARE THE **BENCHMARK**



# OUR VISION IS TO



- Be the benchmark against which innovation, quality and style the industry is measured
- Be the best by far at what we do
- Produce the highest quality from start to finish





# VISIT OUR SHOWROOMS

## JOHANNESBURG

37 Old Kilcullen Road, Bryanston  
Johannesburg  
T: 011 796 5165  
[www.fenster.co.za](http://www.fenster.co.za)  
[info@fenster.co.za](mailto:info@fenster.co.za)

## GEORGE

52 York Street, George  
Western Cape  
T: 044 220 4444  
[www.fenster.co.za](http://www.fenster.co.za)  
[info@fenster.co.za](mailto:info@fenster.co.za)

## CAPE TOWN

62 Marine Drive, (Service Road), Paarden Eiland  
Cape Town  
T: 021 510 0921  
[www.fenster.co.za](http://www.fenster.co.za)  
[info@fenster.co.za](mailto:info@fenster.co.za)